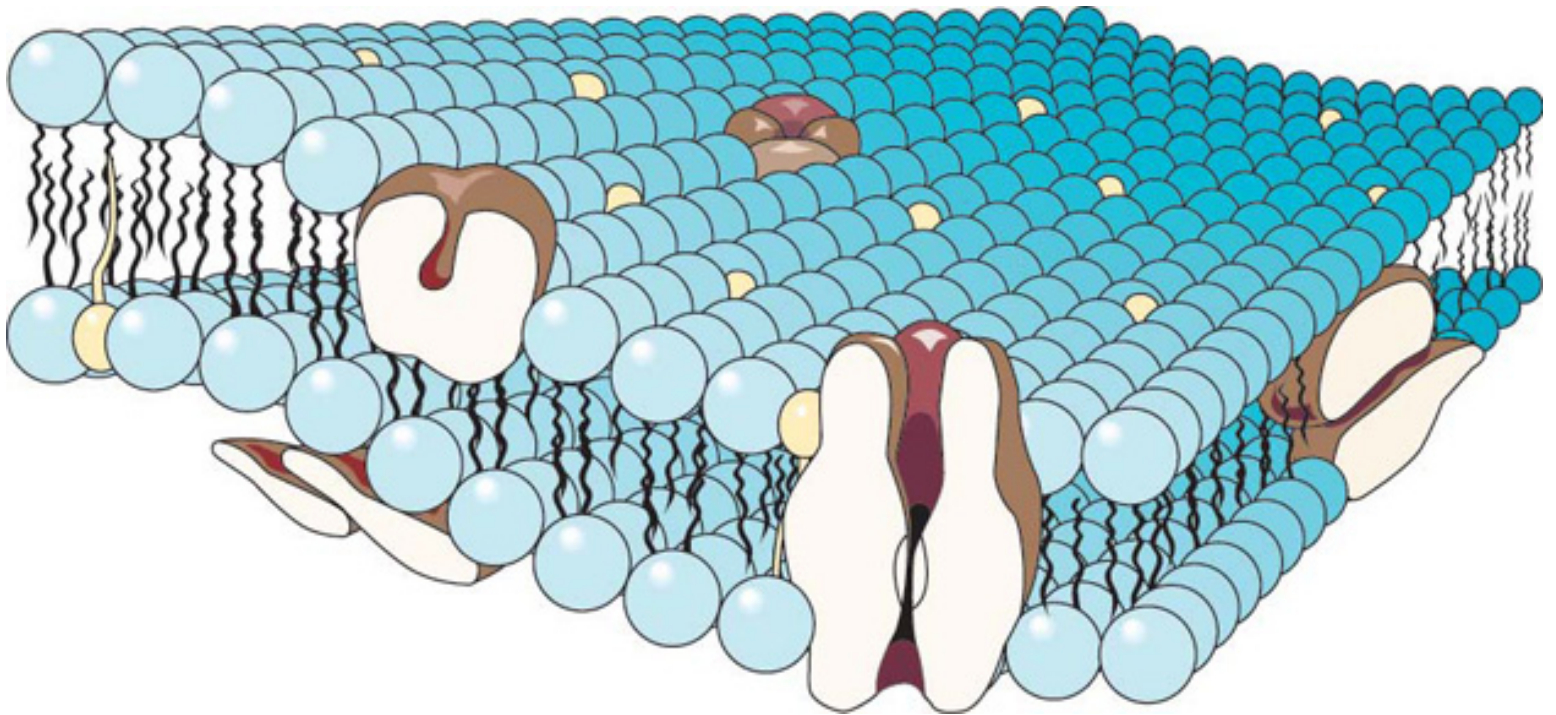


Unit 1: Organization

1-7 Notes

Cell Membrane Transport

Basics:



Inside and outside of the cell are _____.

A solution is a homogeneous _____ of two or more components.

The substance present in the largest amount in a solution is the _____ (pretty much always water).

Anything dissolved in water is called a _____.

***The cell membrane is selectively permeable

This means that a barrier allows some substances to pass through while excluding others.

2 Main Types of Transport:

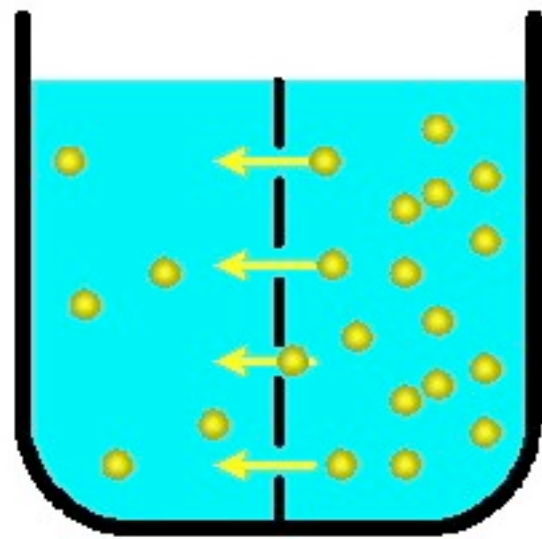
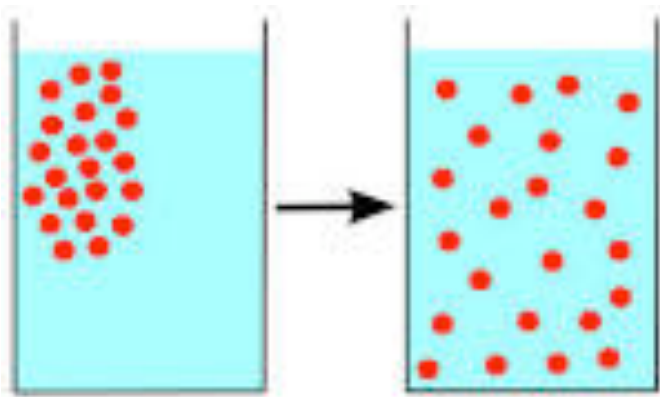
1. Passive Transport – substances are transported across the cell membrane _____ input from the cell.

2. Active Transport – substances are transported across the cell membrane _____ input from the cell.

Passive Transport Types:

1. Diffusion –

***Things go from _____ concentration to _____ concentration.



Diffusion
(Solvent moves by concentration gradient)

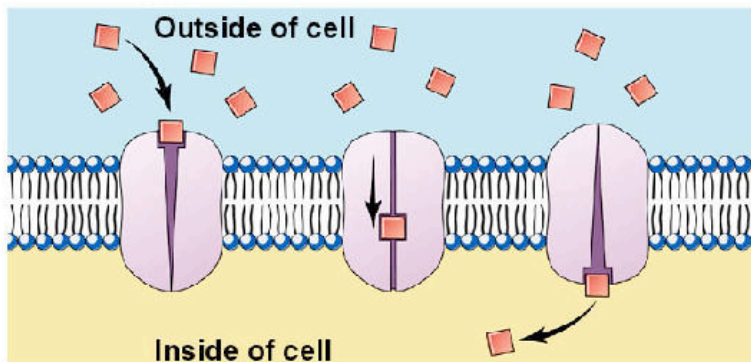
a) Simple Diffusion – the _____ movement of solutes through the cell membrane.

*** Osmosis is a special kind of simple diffusion of _____

b) Facilitated Diffusion – the _____ movement of solutes through the cell membrane.

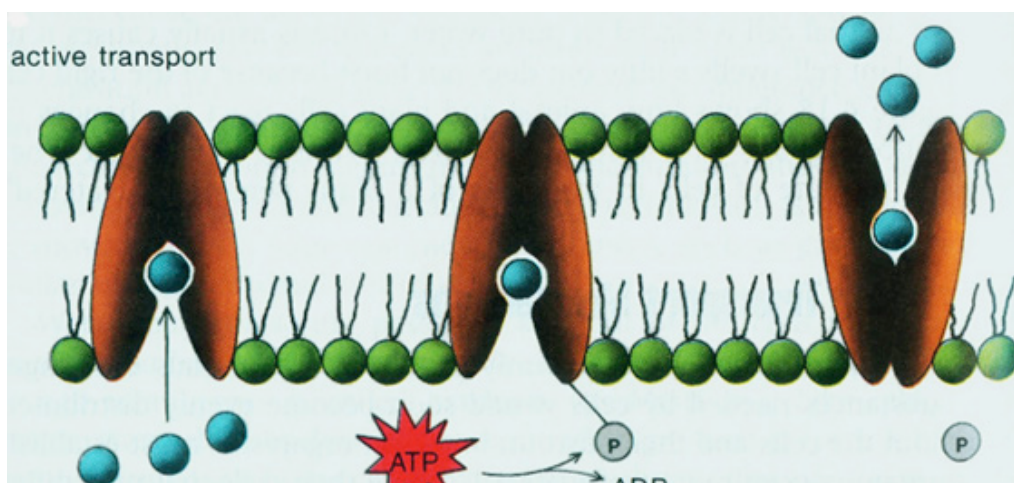
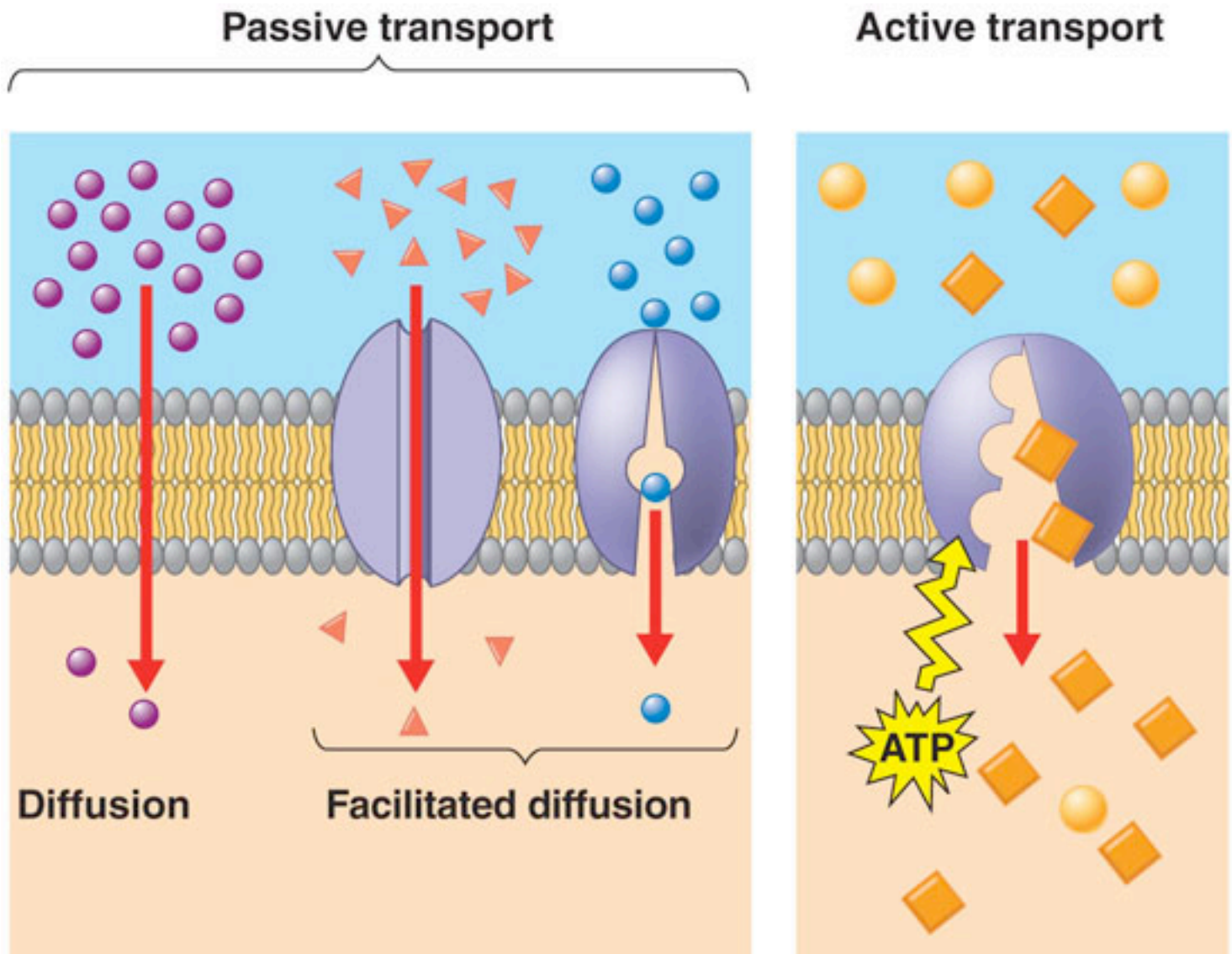
Copyright © The McGraw-Hill Companies, Inc. Permission required for reproduction or display.

Facilitated Diffusion



Active Transport Types – when ATP (_____) is needed to move a substance across the cell membrane.

a) Pumps



b) Exocytosis – “_____”, moves substances out of the cell by packaging wastes.

c) Endocytosis – “_____”, takes up or engulfs a substance from outside of the cell in a package.

